



2a Hoton Road  
Wymeswold  
LE12 6UA  
Tel: 01509  
881513

#### OPENING TIMES

<b>Monday</b>	<b>9am to 5pm</b>
<b>Tuesday</b>	<b>9am to 5pm</b>
<b>Wednesday</b>	<b>9am to 5pm</b>
<b>Thursday</b>	<b>9am to 6.30pm</b>
<b>Friday</b>	<b>9am to 5pm</b>
<b>Saturday</b>	<b>9am to 12 noon</b>

NHS services  
available here



#### Includes

- NHS prescriptions
- Repeat dispensing
- Electronic prescriptions
- Repeat management
- Medicines use review
- New medicines support
- Disposal of unwanted medicines
- Blood pressure monitoring

## June

As we go in to June the uncertainty remains – we are coming out of lockdown but we have to be careful - possibly more than ever to prevent a second wave of infections, hospitalisations and deaths.

#### FIRSTLY

Thanks to everyone for sticking with the rules - we have had a few confirmed cases and sadly one death but overall we have escaped the worst of the virus. We need to "stay alert" to prevent more cases and deaths and we look forward to being part of your efforts to protect our community.

#### SECONDLY

We will be maintaining, or strengthening, our social distancing measures.

Only **ONE** person in the pharmacy at a time – the gazebo will now protect you from the sun (or summer rain) if you have to wait.

Please stay behind the barrier, don't come round the side - we prefer to see who we are talking to. We have the means to take contactless payments and our own patented reaching device to reduce the need to stretch.

#### THIRDLY

We now have the ability to take card payments over the 'phone. This means that you can order and pay for medicines AND toiletries over the 'phone. Maybe a couple of days before they are delivered but you don't need to queue at the supermarket.

#### FOURTHLY

We are reliant on volunteers for delivery of prescriptions and purchased items to isolating/shielding patients. As people go back to work the number of volunteers will go down. So if you need your prescriptions and non-prescription items delivered please :-

- Give us a few days notice – deliveries are generally scheduled for Thursday or Friday
- Don't be prescriptive about times
- Please give us a mobile number, if you have one – we aim to call before delivery
- And please keep your mobile with you; we call before delivery and if we can't contact you we can't deliver

# MARTIN TREE CARE

## Arboricultural Services

Established  
2001



TREES HEDGES

STUMPS

All TREE work undertaken by an  
**INSURED, QUALIFIED, EXPERIENCED**  
**LOCAL** tree specialist

*Clean tidy service all waste removed from site*

**Martin: 01509 21 24 21 Or 07970 314259**

**email: [martintreecare@btconnect.com](mailto:martintreecare@btconnect.com)**

VE day Celebrations in the Wolds  
on Friday 7th May



**Burton on the Wolds Pre-school Playgroup offers a warm welcome to all children from two years old to school age.**

Based in Burton on the Wolds Village Hall on weekdays during term time.

Monday & Friday 9am – 12pm

Tuesday, Wednesday & Thursday 9am – 12pm, 9am – 1pm or 9am – 3pm

We aim to provide high quality care and education for children, enabling them to learn and develop in a fun and stimulating environment. We have a dedicated team of experienced and caring staff who will support your child as they take their first steps in education.

- Ofsted rated 'good'.
- Close links with Burton on the Wolds Primary School.
- For more information or to arrange a visit please call **07528 657859** or email **[botwplaygroup@gmail.com](mailto:botwplaygroup@gmail.com)**





## Alice's Tea Shop



A Warm Welcome awaits at our Traditional Tea Shop  
 At 4 Main Street, Keyworth  
 Tel. 0115 937 5352

- |                           |                                       |
|---------------------------|---------------------------------------|
| Cooked Breakfasts         | Afternoon Tea                         |
| Hot Drinks to takeaway    | Home-made and locally sourced produce |
| Loose leaf teas           | Gluten free options available         |
| Selection of coffees      | Free Wifi – work from Alice's         |
| Light lunches             | Private hire for Celebrations         |
| Delicious Home-made Cakes |                                       |

Like us on Facebook or follow on Instagram  
 AlicesTeaShopKeyworth  
 Or contact us at [info@AlicesTeaShop.co.uk](mailto:info@AlicesTeaShop.co.uk)

Some of our waste sites will reopen from Monday 18 May, but to help stop the spread of coronavirus, sites will be operating differently to what you're used to.

#### Here's what you need to know...

- Only bring waste that could cause you injury or harm by storing it at home. If your waste can wait, please hold onto it, and use kerbside collections where possible.
- The sites at Barwell, Lount, Market Harborough, Melton Mowbray, Mountsorrel, Oadby and Whetstone will be open. They will operate 7 days a week.
- You must book a slot to bring your waste to a site. No booking means no entry to a site.
- We are accepting limited types of waste only, details on our website.
- Giving people set time slots will help us to make sure we can socially distance at our sites, and keep you and our staff safe.

If you need to bring something to a site please book yourself a time slot at: [www.leicestershire.gov.uk/waste-bookings](http://www.leicestershire.gov.uk/waste-bookings) or call 0116 305 0001.

#CAN YOUR  
WASTE  
WAIT?

## FOOT HEALTH PRACTITIONER

A Member of the Alliance of Private  
Sector Practitioners

**Wymeswold Pharmacy**  
Monday & Wednesday 9am – 5pm  
(last app. 4.30pm) – 01509 881513

Or Home Visiting Service

**Mobile 07814266011**



**ALISON MATTHEWS**

email: [walkonvelvet@hotmail.co.uk](mailto:walkonvelvet@hotmail.co.uk)  
DipCFHP, MPSPract

## General News

### Plans being finalized for re-opening of seven county waste sites

The county council is putting the finishing touches to its plans to re-open seven of its recycling and household waste sites next week.

The selected sites will open seven days a week to county residents - with a booked appointment only - from Monday, 18<sup>th</sup> May. They are at Barwell, Lount, Market Harborough, Melton Mowbray, Mountsorrel, Oadby and Whetstone. Seven other sites at Bottesford, Coalville, Loughborough, Lutterworth, Kibworth, Shepshed and Somerby remain closed for the time being.

From today (Thursday, 14<sup>th</sup>), an online booking system is also available by visiting <https://www.leicestershire.gov.uk/waste-bookings>

The council is anticipating there will be a high level of demand for bookings and is reassuring residents that more slots will be made available over the coming weeks.

People are being asked to only bring what they cannot safely store at home for the time being, or if they cannot wait for their kerbside collection services, many of which are being reinstated by district councils

Social distancing will be in operation at the sites, and plans will also include traffic management arrangements. There will be parking restrictions in place around the immediate vicinity of the waste sites.

There will also be restrictions on the type of items people will be able to bring to county locations - so some waste types will still have to wait.

Councillor Trevor Pendleton, county council cabinet member for waste disposal, said: "I want to thank residents for their support around the measures which the council has taken to date, and would welcome their continued support to ensure the arrangements we are putting in place can operate successfully.

"We want our sites to work as efficiently as they can, while prioritising the health and safety of residents and our staff, so I would ask for patience during the first few days of operation.

"Please don't visit our sites, unless waste is creating an issue at home that could cause injury or harm – and you will need a confirmed booking to be allowed on to the site."

For more updates, visit [www.leicestershire.gov.uk/waste](http://www.leicestershire.gov.uk/waste)

*Councillor Richard Shepherd*

## Borough Councillor Report

### Community & Business Support

- Loughborough Against Coronavirus now has 900 volunteers in collaboration with Charnwood Council & John Storer House in Loughborough. Over 2000 food parcels have been delivered and 350 "friendship" calls have been made to vulnerable people living on their own.
- Brown bin collection of garden waste has restarted. The next one in the Wolds is scheduled for **Monday 16th June** (ie monthly) and 7 tips have now reopened in May, including Mountsorrel for Charnwood. Only certain waste is being accepted but it does include garden waste and you **need to book a slot**. If you turn up without booking, you will be turned away. See County website
- There is a £5 refund on current brown bin subscription renewals due to loss of service & you can now take out a new subscription if you were not in the scheme before (see CBC website).
- **Bonfires for garden waste are temporarily banned in order to protect residents with asthma or other respiratory problems.**
- All councils will now have a Parish Council Liaison Officer who will lend support, including financial, to all Parish and Town Councils.  
**CBC have given out over £20M in (non repayable) grants to local businesses** who pay business rates. These range from £10K to £25K. I would urge all businesses, however small, to apply (see website for Business Support Grants).

### Coronavirus Statistics

As far as I am aware there have been 2 deaths confirmed in our area from Covid 19 and one other unconfirmed death in the Wolds villages (which includes Rearsby and Cossington) but these figures are 2 weeks behind. This death rate is way below large towns or cities ie less than 1% per 100,000. See National Statistics Office website. In Leicester, Leicestershire and Rutland NHS Trust (LLR), up to 19 May, there were 2008 lab confirmed cases and sadly, 326 deaths in a population of 1.1 million people.

However, **this is not indicative of the rate of infection** as I am aware (as opposed to being in contact with) of quite a few suspected infections in the Wolds, which started before "lockdown" (eg in January or February) and after, so there is no room for complacency. One small choir, for example, in Bradford is quite sure they were infected early January, after one member's partner returned from Wuhan. As such, some "experts" predict that over 17million people may have already been infected in the UK, many with no symptoms or very mild ones.

Most of these suspected cases are not confirmed as testing was only being done in hospitals until end of April and tests at the moment (even at testing stations) can only detect if you currently have it, not if you have had it. No-one will know for sure until a reliable home test comes out for antibodies, possibly end of June. The Jenner Institute at Oxford University is leading the way for this antibody test and a potential vaccine, for which human trials have already started.

**Nearest testing centres for current suspected infections are Birstall or Nottingham. Book online.**

### Recovery Plan & easing of Lockdown

Led by government, we are already looking at how we come out of lockdown at the Borough Council. This will be in stages, like Spain & Italy. Queues and social distancing in shops is here to stay for some time.

The physical logistics of re-opening shops and the market in


Loughborough is not easy whilst applying safe distances. If queues are lengthy, they will just run into each other so maybe staggered opening times or days. There may be a trial food market in Loughborough at end of May, with limited stalls, to see how it runs. Outwoods is now open. Car parking is free. However, the idea of browsing around shops and having a coffee as a form of leisure, is definitely no longer a way of life for the time being!!

The annual fair in November is debatable this year, as is the Pantomime season, unless there is a vaccine.

The economic recovery plan for the Borough (due in June) will look at the next 2 - 3 years but some businesses will not survive, unfortunately.

**Any questions please email me at [jennybp54@aol.com](mailto:jennybp54@aol.com) or phone 01509 881428 or mob: 07854 869909**

*Cllr Jenny Bokor  
Borough Councillor for the Wolds  
Cabinet Member for Loughborough*




**Wymeswold Playgroup**

**Wymeswold Playgroup Offers  
Childcare & Preschool Education for  
Children Aged 2yrs to School Age**

We offer a safe and caring environment where children feel happy and relaxed. We encourage learning through play, art, music and a variety of other indoor and outdoor activities whilst following the Early Years Foundation Stage curriculum.

Run by experienced, qualified and dedicated staff who help children reach their full potential.

We offer very competitive rates and up to 15 hours free childcare for children 3 years plus. 2 year and 30 hour funding is also available where eligible.



For more information, to arrange a visit or to register for a place, please contact Carol on 07599059061 or email: [wymeswoldplaygroup@btinternet.com](mailto:wymeswoldplaygroup@btinternet.com)

We can also be found on Facebook

Charity Number: 1027215

<b>Ofsted Rated 'Good'</b>
<b>Funded Places Available</b>
<b>Large Outdoor Area</b>
<b>Monday to Thursday 9.15am - 12.15pm Fridays 9.00am - 3pm Term Time Only Lunch Club till 1.15pm Available on Mon, Tues &amp; Thurs</b>
<b>Close Links with Wymeswold Primary School</b>
<b>WYMESWOLD PLAYGROUP</b> Memorial Hall Clay Street Wymeswold Loughborough Leicestershire LE12 0TY Tel: 07599059061 <a href="http://www.wymeswoldplaygroup.co.uk">www.wymeswoldplaygroup.co.uk</a>

## Pet Sitting Service



Friendly, reliable Pet sitter/Dog walker available in Wymeswold and surrounding Villages.

I will look after your pets, in the comfort of your home, while you are at work, holiday or self isolating.

I am fully insured and have years of experience with various small pets including Cats, Dogs Chickens, Guinea pigs, Rabbits etc.

Prices start from £4.00 a visit.

**Please call Liz Gray on 01509 889513 or 07419841778 to discuss your requirements.**



**1<sup>st</sup> Wolds Scout Group**

**Scouting keeps going  
It's in challenging times that our kindness and  
courage matter most**

Things are tough at the moment, and it's likely that they will stay that way for a while longer. That's why our 'never give up' spirit is so important – we know that we will all rise to the challenges. We are certainly in challenging times and it is times like this that the importance of scouting comes to the forefront.

Scouting goes on – we have had virtual camps, fundraising by hiking to the moon, supported Duck Race weekend, joined in on VE Day, one of our Scouts, Edward, played his violin in the street when we were thanking the NHS, teddies with 1<sup>st</sup> Wolds neckers can be seen in house windows. Normal Scouting goes on with all sections keeping in touch with their Beavers, Cubs and Scouts. We will carry on with badge work at home such as Chef, DIY, music, technician etc.

Some of our Scouts have received their Personal Challenge badge for various successes like, courage, persistence, team leadership, fund raising, exceptional effort and overcoming difficult times.

We have also awarded some recent badge completions – Climbing, Community Impact, Local Knowledge, Emergency Aid and Hikes.

Corona has stopped us from starting back this term and our programme is on hold for a bit but we will be planning and ready for the day everything returns to 'normal'. We have postponed our AGM and a few other things. There are lots of activities on the Scout Association website for anyone, not just those in scouting, to use.

**Proposed new Beaver Section:**

The new Beaver Colony is on temporary hold but leader recruitment continues so that we will be ready to get it all going again.

**Beech Party**

I think at the time of writing that I may be a little over ambitious in hoping that our Beech Party on 6<sup>th</sup> July will be a celebration. Keep safe.

The Scout Promise comes in handy at this time for everyone.

**On my honour,  
I promise that I will to do my best  
to do my duty to God and to the Queen,  
to help other people and to keep the Scout Law**

**The Scout Law  
A Scout is to be:**

**Trusted, Loyal, friendly and considerate, courage in  
difficulties, makes good use of time, careful of  
possessions and property, has self-respect and respect  
for others.**

The old poem that went with that was;  
'Trusty, loyal, helpful, brotherly, courteous, kind,  
obedient, smiling, thrifty, clean in thought word and  
mind'.

**A SCOUT'S DUTY IS TO BE USEFUL AND TO HELP  
OTHERS. Especially at these times**

**The 1<sup>st</sup> Wolds Section Leaders:**

**Group Scout Leader & Scout Leader:**

**Peter Blount 01509 889692**

**Beavers:**

**Beaver Leaders:**

**David Bradshaw/Mandy Hickling  
David:07879 846812 Mandy:07709784118**

**Cub Scouts:**

**Cub Scout Leader: Shaun Black 01509 880438**

**Scouts:**

**Scout Leader: Peter Blount 01509 889692**

*Peter Blount*

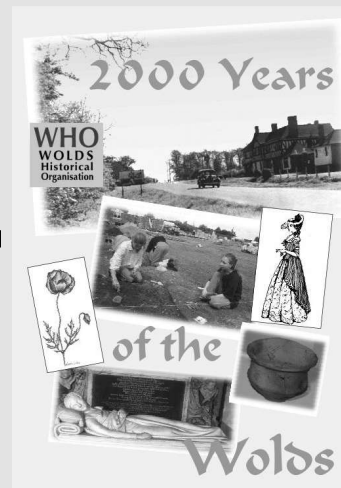
The linked talk and walk scheduled as the WHO's June and July meetings have been postponed until next year. All being well we will resume meetings on Tuesday 15th September.



In the meantime I have been preparing digital versions of five booklets written and originally published by the late David Lazell, the historian based in East Leake who wrote about a surprising variety of topics. These booklets include *Sir Julien Kahn at Stanford Hall and a View from the Co-operative College* – written when the Co-op were still using the Hall and long before the recent conversion to the DNRC.

Also new online is a PDF version of the WHO's booklet *2000 Years of the Wolds*, published in 2003. Even if you own a copy do reacquaint yourself with the new version as, where possible, the original colour photographs have been substituted for the black-and-white versions in the printed copies.

Links to these and many other PDFs of local interest (and some YouTube videos too) are on the WHO's website: [www.hoap.co.uk/who/](http://www.hoap.co.uk/who/)



Stay safe and very best wishes

*Bob Trubshaw  
Chair, Wolds Historical Organisation  
01509 881342  
bobtrubs@indigogroup.co.uk*

# Dave Noble's

## New Shop Location in Wymeswold Village

Ski / Snowboard / Wintersports and Cycle  
Sales / Repairs and Servicing.

Shop attached to our wholesale warehouse  
which is open to the public.

### Bikes and accessories

Skis

Snowboards

Boots

Bindings

Impact Protection

Helmets

Bags

Wax and Tuning

Clothing

And much much more!



Custom House - Hillside Farm  
Rempstone Road  
Wymeswold  
Loughborough, Leics  
LE12 6UE  
Tel: 01509 881111  
www.nobleboards.co.uk  
info@nobleboards.co.uk



## Burton on the Wolds Tennis Club

Period	Monday	Tuesday	Wednesday	Thursday	Friday	Saturday	Sunday
9.00 – 13.00	club	public	club	club	club	public	club
13.00 – 15.00	public	club	public	club	public	Coaching 2.30pm to 4.30pm	club
15.00 - dusk	club	coaching	public	Club	club	Club 4.30pm on	public

### Timetable for tennis courts.

To book a court during public time please contact Pam or Peter Harrison on 01509 880058. Please note Monday and Friday public times maybe used by BOW school and occasional Wednesdays so please check.

The key for court is available from Pam and Peter at 51, Barrow Road, Burton on the Wolds.

Cost is £4 per court per hour for adults and £2 an hour for under 16 years to hire. To join the club go to [www.burtontennis.org.uk](http://www.burtontennis.org.uk)



## Hire Burton on the Wolds Village Hall

To book please contact

[BOTWVillageHall@gmail.com](mailto:BOTWVillageHall@gmail.com)  
Or telephone 07421307029



## Diary Dates

### September

Sun 6th Hoton Village Show  
Sat 26th Wymeswold Church Appeal Curry and Quiz

### December

Fri 4th Hoton Christmas Light switch on  
Sat 5th Christmas Coffee morning, 10.30-noon at  
Walton Village Hall  
Thurs 17th Carols by Candlelight at Hoton Village Hall

**Please note many of the above dates may be cancelled due to COVID-19. Please check with the organisers.**

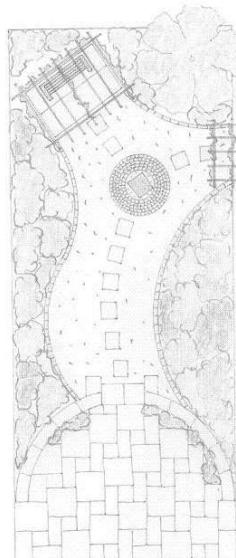


For all your Garden  
Requirements

Tel : 01509 416445  
07748635095

Complete Landscape Service :

- Garden Designs
- Patios
- Decking
- Ponds
- Water Features
- Pergolas
- Fencing
- Turfing
- Planting Schemes
- Block Paved Driveways
- Brick and Stone walling
- Garden Maintenance

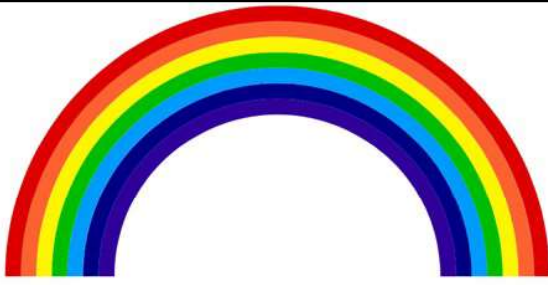


Free Quotations

Website: [www.barrowlandscapes.co.uk](http://www.barrowlandscapes.co.uk)

Thank you  
**NHS**  
and all Key Workers





## Burton on the Wolds Baby and Toddler Group

Burton on the Wolds Village Hall

Mondays 2pm – 3.30pm during term time

A stay and play group for children from birth to  
school age

Play, craft and snack

Come and meet other parents and children

£2.50 per family

Everyone welcome

For more details contact Melissa (07538 201463)



## Guiding in

**Rainbows – aged 5 -7**

Contact: Vera Williams

01509 880996

**Brownies – aged 7-10**

Contact: Karen Dilks

01509 880803

**Guides – aged 10 – 14**

Contact: Vera Williams

01509 880996

## Wymeswold and Wolds Villages



### **Roman Catholic Services: East Leake & Keyworth:**

Father Michael (Parish Priest), Our Lady of the Angels, Main Street, East Leake (01509 852147).

[www.grasshopper-hosting.co.uk/eastleakeandkeyworth/04\\_MassTimes/MassTimes.html](http://www.grasshopper-hosting.co.uk/eastleakeandkeyworth/04_MassTimes/MassTimes.html)

**Saturdays:** 6pm (Vigil Mass of Sunday) Our Lady of the Angels, Main Street, East Leake.

**Sundays:** 9am St Margaret Clitherow, Willow Brook, Keyworth. **Sundays:** 11am Our Lady of the Angels, Main Street, East Leake.

### **Anglican**

St Mary's Wymeswold Churchwarden: Michael Henshaw (880218), Assistant Church Wardens: Chris Keeling and Elizabeth Tingle  
Verger for St Mary's: (See voluntary list inside the church)

St Mary's, Walton Churchwarden: see voluntary list inside church

St Andrew's Prestwold Churchwarden: see voluntary list inside church

### **Methodist**

Rev John Pugh, 18 Kingfisher Road, Mountsorrel, LE12 7FG (01162304689) Day Off: Saturday

Superintendent Minister: Rev Andrew Lomax, Logos House, 23 Lemontree Lane, Loughborough, LE11 2QS (01509219804) Day Off:  
Monday

Circuit Administrator: Mrs Josephine Wills, c/o Trinity Methodist Church Centre, Royland Road, Loughborough: (01509807441)

Office hrs: Mon, Tues, Thur, Fri 10am to 2pm [loughboroughmethodist@gmail.com](mailto:loughboroughmethodist@gmail.com)

Church Stewards: Margaret Folwell (880770).

### **Barrow Baptist Church**

Minister: Rev Ben Haldane, Beveridge Street, Barrow upon Soar 01509 416603 [administrator@barrowbaptist.org.uk](mailto:administrator@barrowbaptist.org.uk)

Services are held at 10am on Sunday mornings. There are various mid-week groups for all ages, please contact us for more  
information.

### **Barrow & Wolds Group of Churches**

Priest in charge Rev'd Clive R Watts

T: 07534 899522

E: [rev.clive.watts@barrowandwoldsgroup.com](mailto:rev.clive.watts@barrowandwoldsgroup.com)

A: The Rectory, 27 Cotes Road, Barrow-upon-Soar, LE12 8JP

W: [www.barrowandwoldsgroup.com](http://www.barrowandwoldsgroup.com)





## SIX ACRE NURSERIES GARDEN CENTRE GARDEN DELI & COFFEE SHOP

Conveniently located on the A60 just outside Loughborough.  
We are an independent, family-run, horticultural nursery.



You will find everything you need at our nursery;

- Perennials - Climbers - Heathers - Roses - Fruit trees -
- Ornamental Trees - Fruit and Vegetables - Hedging Plants -
- Seasonal Bedding Plants - Pots and Sundries -

Visit our  
**GARDEN DELI & COFFEE SHOP**  
for a wide range of delicious food and drink

Phone:  
01509 856079  
Opening Times  
Monday - Saturday 9am to 5pm  
Sunday & Bank Holidays 10am to 4pm  
Garden Deli & Coffee Shop closed Mondays

Six Acre Nurseries  
Loughborough Road  
Costock  
Loughborough  
Leicestershire  
LE12 6XB

# HA&W

Hunter Aitkenhead & Walker  
CHARTERED FINANCIAL PLANNERS



## We are Chartered Financial Planners

Helping people in Leicestershire achieve their financial objectives.  
We are retirement experts. If you are considering your retirement options, or have questions about pensions, we'd be happy to help.



Our website is regularly updated with personal finance news.

You can browse the articles by visiting: [www.ha-w.co.uk/news](http://www.ha-w.co.uk/news)



Contact us:

4 Brook Park,  
Gaddesby Lane,  
Rearsby, LE7 4ZB

01664 778 899  
info@ha-w.co.uk  
www.ha-w.co.uk

Hunter Aitkenhead & Walker Ltd is authorised and regulated by the Financial Conduct Authority



## STEPHEN MORRIS LANDSCAPES Ltd

We offer a full range of domestic garden landscaping solutions for both large and small projects including -

- Paving
- Block Paving
- Garden Walls
- Lawns & Planting
- Decks & Pergolas
- Garden Designs



01509 889746  
or  
07920 260706

[www.stephenmorrislandscapes.co.uk](http://www.stephenmorrislandscapes.co.uk)



# Wolds Garden services

Garden Maintenance

Soft Landscaping

Turfing

Patios & Fencing

Free quotes & advice call Kevin Lewin

## Tel 01949 81231

THE WINDMILL INN  
*'The Windy Store'*  
LITTLE WINDY FOOD BOXES

**COLLECTIONS ON SATURDAY\***  
(DELIVERIES TO VULNERABLE GROUPS IN THE VILLAGE IF POSSIBLE)  
MINIMUM SPEND £17

**HOW TO ORDER?**

1. CHOOSE WHAT YOU FANCY FROM THE OPTIONS BELOW
2. CALL 01509 881313 BETWEEN 12-3PM ON WEDNESDAY OR THURSDAY TO ORDER, PAY OVER THE PHONE AND CHOOSE A TIME SLOT
3. COLLECTION WILL BE FROM THE FRONT DOOR IN YOUR TIME SLOT FROM 11AM. THIS WILL ALLOW SOCIAL DISTANCING FOR SAFETY OF YOURSELVES AND OUR TEAM MEMBER.
4. FOOD IS PACKED IN PLASTIC CRATES AND CAN BE QUITE HEAVY.

PLEASE BRING YOUR 'BAGS FOR LIFE' WITH YOU OR PLEASE RETURN THE CRATE TO THE PUB

<p><b>- MEAT BOX -</b> £36</p> <p>1.5kg Whole Chicken 1kg Minced beef 1kg Stewing Steak 1kg Lincolnshire sausages 2 x minute steaks (oz) 1kg streaky bacon</p> <p><b>'PIMP YOUR MEAT BOX?'</b> Add</p> <p>9oz Sirloin (05 day aged Hereford) £6/11 10oz British Barnsley lamb chops £5/9 20oz bone on sirloin £10/19 16oz Chateaubriand (05 day aged Hereford) £20/38 2kg shoulder of lamb £15</p>	<p><b>- FRUIT &amp; VEG BOX -</b> £25</p> <p>2 x kg potatoes 4 x cooking onions 1kg wonky carrots 1 x large leek 1 x baby swede 1 x hispi cabbage 1 x garlic bulb 125g mixed leaf salad 1 x baby gem 4 x flat cap mushrooms 4 x tomatoes 4 x satsumas 4 x apples 4 x bananas 1 x lemon &amp; 1 x lime (for your gin?)</p> <p><b>ADD SOME MEAT?</b></p> <p>1.5kg Whole Chicken £9 1kg Minced beef £9 1kg Stewing Steak £10 1kg Lincolnshire sausages £8 1kg streaky bacon £8 for 1/2</p> <p>10oz British Barnsley lamb chops £5/9 4oz minute steak (05 day aged Hereford) £4/7 9oz Sirloin (05 day aged Hereford) £6/11 20oz bone on sirloin (05 day aged Hereford) £10/19 16oz Chateaubriand (05 day aged Hereford) £20/38</p>	<p><b>- EXTRAS -</b> per item</p> <p>sliced fresh bread (white or brown) £2.75 4 pints of fresh British milk* £2.00 6 hen eggs £1.75 a tray of eggs (30) £8.00 250g butter £2.50 250g baking butter (vegan) £1.50 1.5kg bread flour £2.75 1.5kg self raising flour £2.75 4 pack of toilet roll £2.00 500g fresh yeast £3.50 cucumber £1.00 green pepper £1.00 200g mature cheddar £2.00 500g penne pasta £2.50 3kg penne pasta £10.00 1kg granulated sugar £1.35</p> <p><b>- WINE -</b> We also have wine and other drinks available for purchase. Please ask when you're ringing your order through.</p>
--	--	---

OUR BOXES WILL BE PACKED/DELIVERED USING DISPOSABLE GLOVES AND SANITISER WILL BE PROVIDED AT COLLECTION  
All food is from our local suppliers. The Veg Factor, Ray Camplejohn in Syston. All Purpose. Some items may be substituted due to availability.  
Prices and availability of some products are very likely to change over the coming weeks  
#shoplocal #dontleavetheVillage #besafe

**ALEX'S TAXI**



*Friendly and reliable Service*

*Long or short Journeys*

**Please call 07473557180  
01509 733903**

**ArtsWeb**

**Photography**

Portraits  
Weddings  
Social  
Photo Restoration  
Videos & DVDs

**Phil Hutchinson  
01509 881500**



36a Sowters Lane, Burton on the Wolds,  
Loughborough, Leicestershire, LE12 5AL

**T.01509 881596**

**Any Make & Model Repaired**

**Mechanical Repairs**

**Full Servicing**

**Free Quotations**

**Welding**

**M.O.Ts for Cars & Light Vans**

Collection Service Available

**HAMMER & PINCERS**  
W Y M E S W O L D  
MORE THAN JUST A RESTAURANT

**Lunch**

Tuesday to Saturday 12 till 2

Set menu now Set 3 course menu £29

Sunday Lunch now 3 courses for £32

**Dinner**

Tuesday to Saturday 6 till 9

7 Course Grazing menu From £50

Saturday Night Grazing From £65

01509 880735

5 East Road, LE12 6ST