

# | Mantle Solar Farm

March 2025

exagen



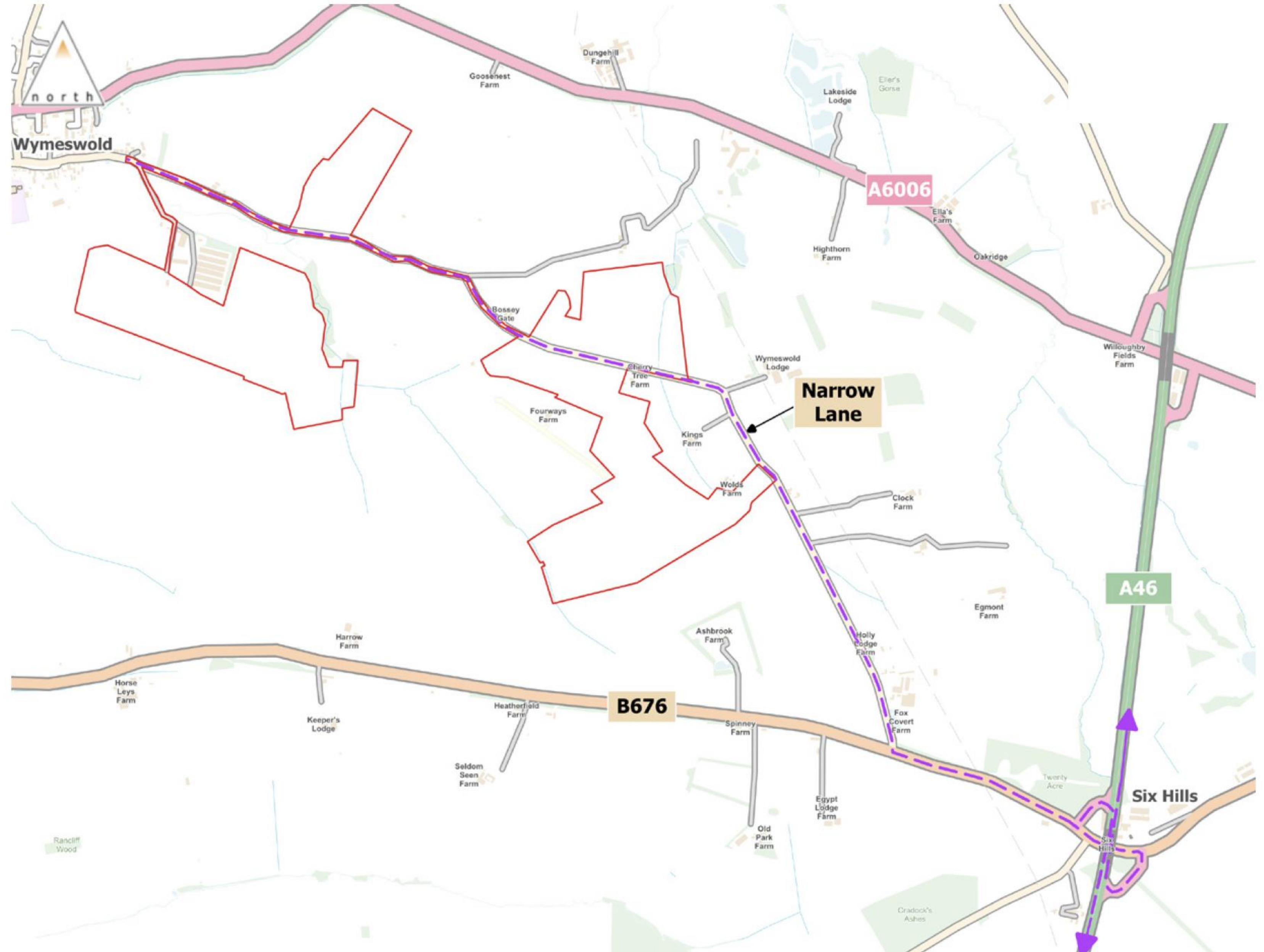
# Site location and access

Exagen have engaged an independent transport consultant to identify the most appropriate construction access route - this avoids HGVs travelling through Wymeswold, instead approaching from the A46 from the southeast via Melton Road and Narrow Lane.

They will also design appropriate access junctions into each land parcel - existing access points will be upgraded where required.

## Key

-  Land available for development
-  Access route





# Why do we need the project

- ▶ Support the UK's movement away from large centralised generating stations to smaller decentralised generators
- ▶ Solar is one of the quickest and cheapest forms of electricity generation
- ▶ Powerful project within the UK because of the sunny location and coastal effect
- ▶ Temporary development which can result in a significant biodiversity improvement during its lifetime
- ▶ Help with the transition to a low carbon electricity network according to national targets for renewable energy.
- ▶ Early connection date means the project will produce more power, earlier, offsetting more gas power generation.
- ▶ Contributing to reducing the UK's power system emissions, all part of the UK's net zero target by 2050.



# Key stats

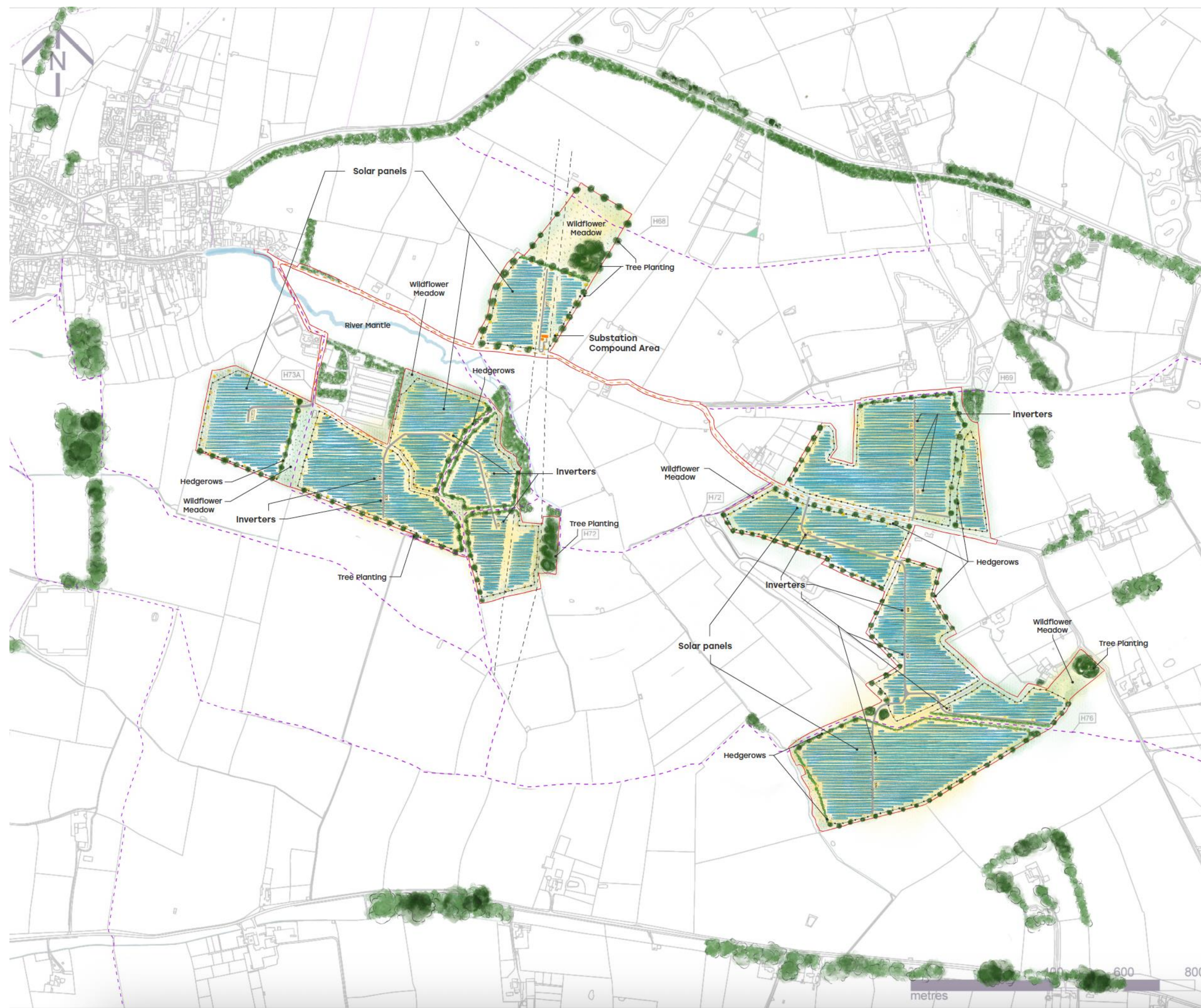
The solar farm has an export capacity of **49.9MW**, which is equivalent to the annual electricity usage of **18,800 homes in the UK**.



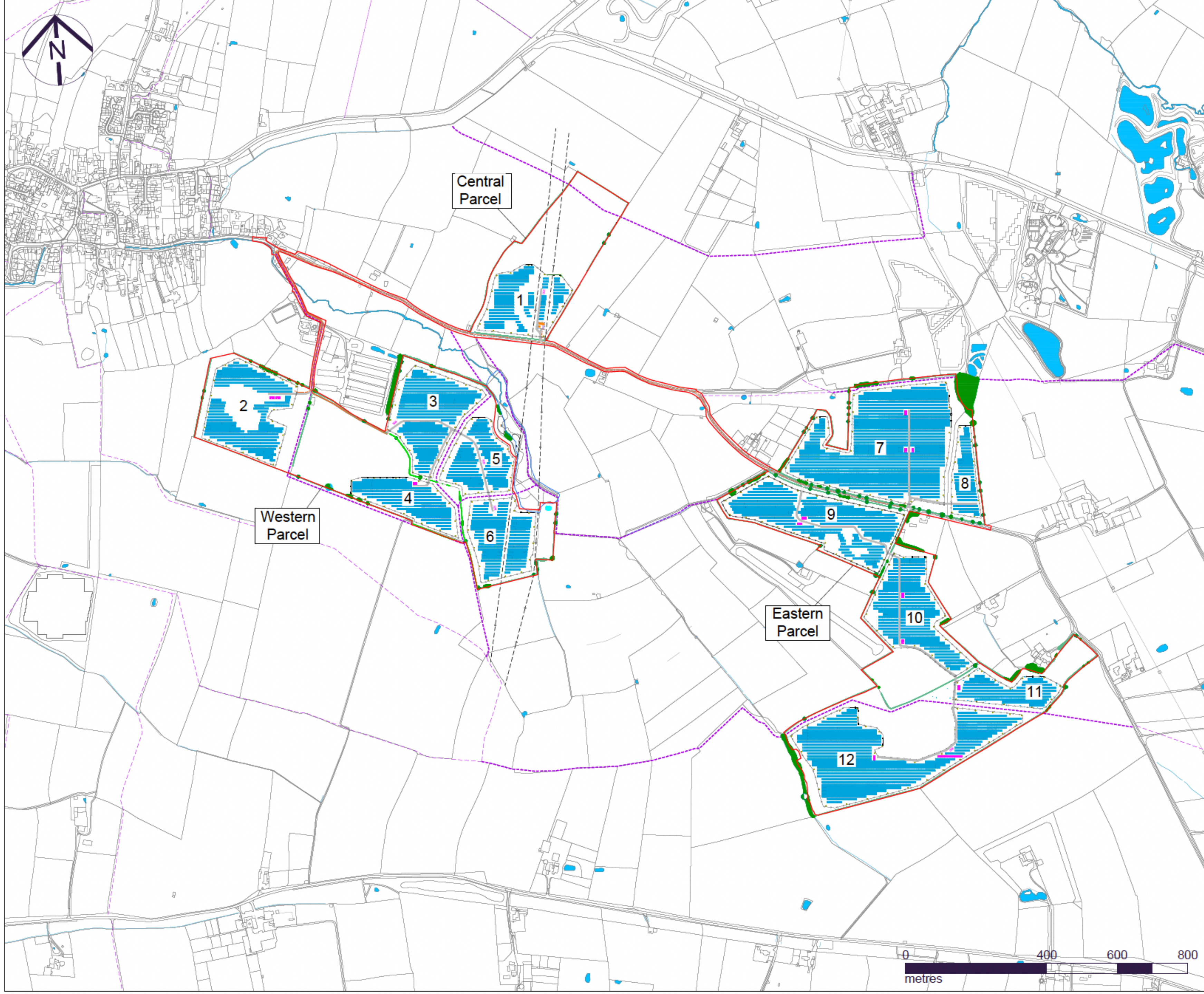
**Significant biodiversity improvement** - landscaping to include enhancement of existing boundary features, creation of new hedgerows, woodland areas, species rich grassland beneath the panels and areas of wildflower meadow around public rights of way/ field margins.





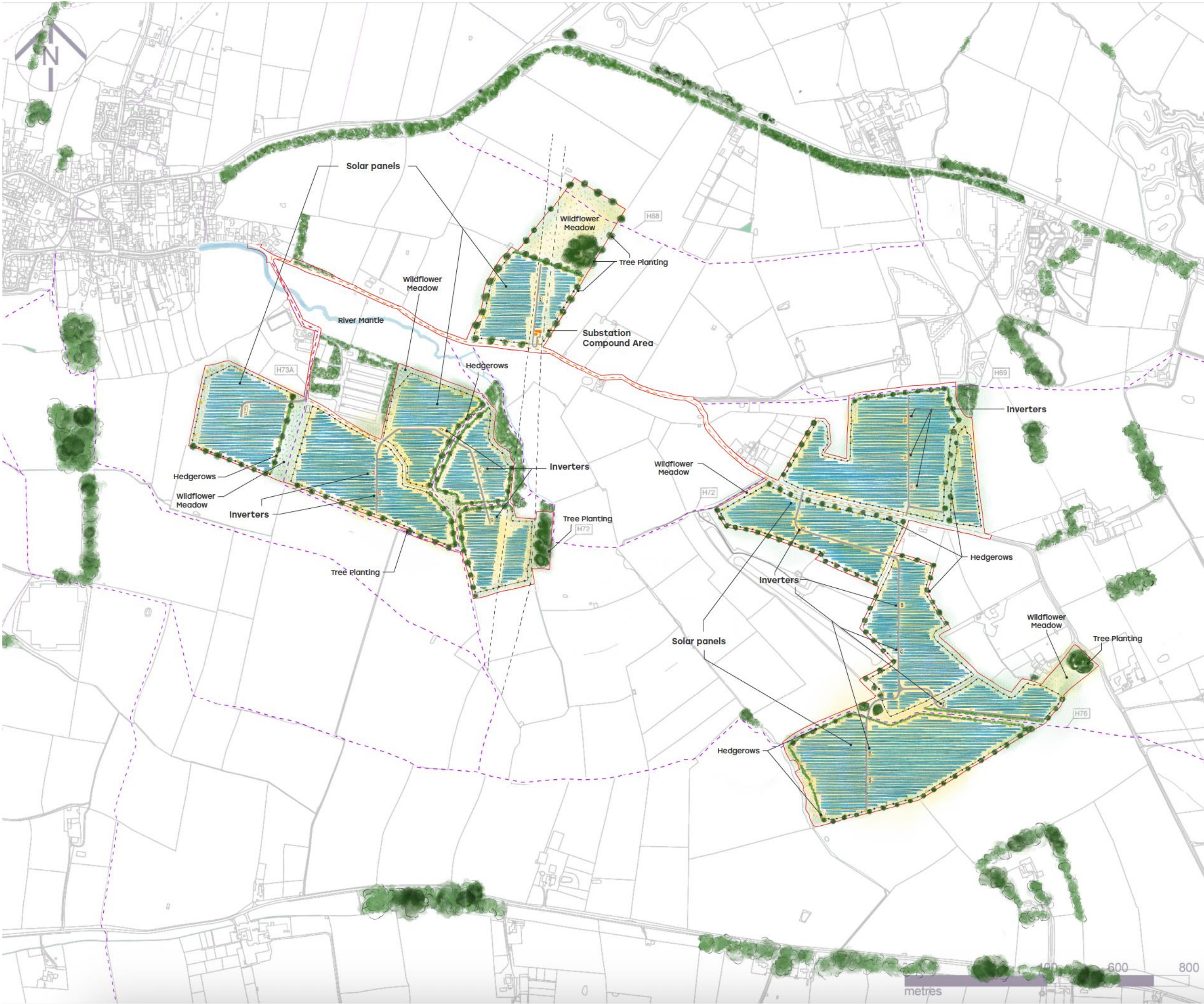




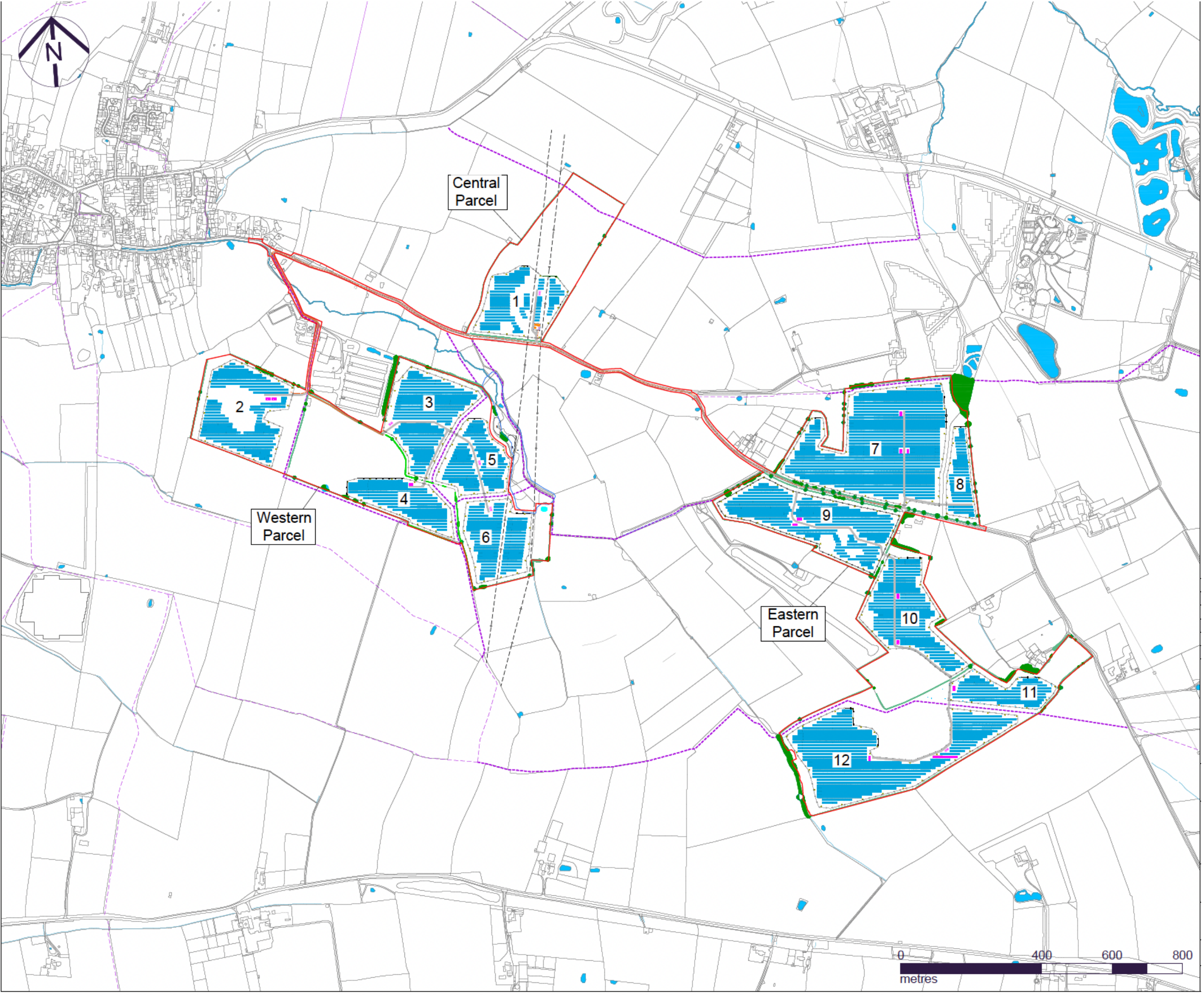




Public Consultation Layout Jan/Feb 2025



Updated Layout Mar 25





# | Key Changes

## Western Parcel

A larger area of panels is omitted from the centre of field 2 due to archaeological sensitivities. The solar panels are set back 50 m from the PROW running north to south and planting is proposed to the east of the solar panels – the planting also avoids an area of sensitive archaeology. An area of woodland planting is also included in the northwest corner to further screen any views from Wymeswold.

Panels have been removed from a larger area northwest of field 4, this is again to respect sensitive archaeology and also an offset from a pond containing great crested newts. The land here will be managed for breeding skylark, likely through a rotation of arable cropping and managed grassland. A permissive path links two PROW on site along the south of the poultry farm.

All PROWs are retained through fields 3, 4, 5 and 6 with 20 m corridors and new hedgerow planting with trees which will help to screen the solar farm when mature. Blocks of woodland are included to the north of field 3 and 5 and the field east of 6 is retained as enhanced grassland with a pond to be created.

## Central Parcel

North of central parcel – panels removed to avoid direct impacts on sensitive archaeology and set back to maintain longer distances views south from the PROW crossing the site. The area will be managed for breeding skylark and landscaping is provided to the north of the solar panels in the form of hedgerow and small woodland blocks. The solar panels are kept on the lower part of the slope to be less visible or prominent. A permissive path is included up the west side, linking the PROW in the north with Narrow Lane, the Wymeswold Meadows Local Nature Reserve and existing footpaths continuing south.

## Eastern Parcel

The only access requiring vegetation management to achieve suitable visibility splays is the access off Narrow Lane into field 7 – approx. 140 m of hedgerow east and west of the junction will need to be relocated behind the visibility splay. This will be done under arboricultural advice at the right time of year but ensures the existing hedge is retained. A group of three immature ash tress will be removed but the semi mature oak to the west of the access will be retained.

An area of woodland is proposed north of Narrow Lane east of the access to improve screening from the properties nearby. The PROW to the north is retained and a new hedge planted along its length as it crosses the site.

Some small areas of sensitive archaeology are avoided in fields 9 and 10. The panels have been moved slightly south in the top of field 10 to set back from residential properties and provide space for a small block of woodland to be planted.

A large area has no infrastructure between fields 10 and 12 – this is to avoid sensitive archaeology and as elsewhere on site will be managed for breeding skylark. By removing panels from the northern part of this area there is also an empty field left at the end of the airstrip. Advice during consultation was there was an accident last year where a plane missed the airstrip and crashed in the field. By avoiding infrastructure in this field that helps provide a less obstructed emergency landing area.

Panels have been set back from the River Mantle corridor to the southwest of field 12 and the PROW through 11 and 12 is retained with a new hedge planted either side. The limit visibility from Narrow Lane and Wolds Farm the infrastructure is set back from the road and woodland planting is included to the north and northeast of field 11.

## General

Following discussion with the local bee keeping group it is confirmed that hives for honey bees will not be housed on site, instead the habitats created will benefit native bees.

New planting will include a mix of native species with significant focus on including hedgerow trees which are currently absent. Area of poor existing hedgerows will also be enhanced/strengthened.



# Benefits to the local area

- Local contractors and businesses will be engaged as far as possible during the construction and operational phases, where services offerings are available. This could include ground maintenance, hedge cutting, trackway, etc.
- When the project is operational we will provide a community benefit fund which will be tied to the project for its lifetime, this can provide funding for local amenities and support for organisations. We welcome suggestions on where and how this money should be used to provide maximum community benefit. More details will be shared as the project progresses.





exagen

**Thank you**



# | Questions

exagen